

Company: M & F Air Conditioning Site: Premier Inn, Littlehampton

M & F Air Conditioning are currently working on a new Premier Inn in Littlehampton. The site is a 20 bed timber frame extension being built right next to an existing Premier Inn which is still in use.

The job included fitting a 20 FCU Mitsubishi Electric VRF system. The indoor FCU's are 'hotel style' slim ducted units. The pipework was situated in a tight loft space, sitting in a basket with cable inside it and directly on top of new chipboard flooring so brazing would have been a huge issue especially as this was a fasttrack project using ZoomLock has been a great advantage.



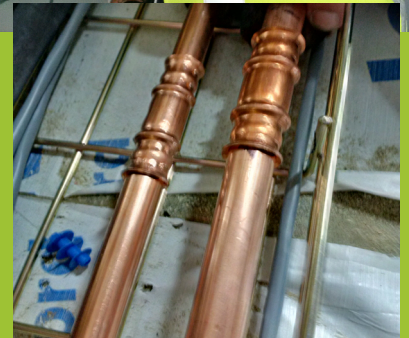
"It's better for site, better for us, a better tool all around for everyone."



Jim, the installer said "Compared to brazing ZoomLock has cut the time needed in half. All 34 Joints have been completed and finished in under 2 1/2 hours, which with brazing would be at least double that time".

With ZoomLock there is no firewatch afterwards, so no need to review every braze joint an hour after it was done to ensure there is no fire hazard.

When asked would others find it easy to use Jim said "You should definitely give it a try. It'll change your mind instantly - it's so much better, a lot quicker and gets it done so you can move onto the next job. We were able to come straight onto site without any delays with site agents and hot works. It's better for site, better for us, a better tool all around for everyone."



See more of what Jim has to say in a short video by clicking below



You can also see the ZoomLock Tool in Action on site by clicking the image to the left.

